

5

Exercise 5, measures 1-4. The staff begins with a treble clef and a double bar line. Measure 1 contains a diamond-shaped rest followed by two eighth notes. Measure 2 contains a quarter rest followed by two eighth notes. Measure 3 contains two eighth notes followed by a diamond-shaped rest. Measure 4 contains two eighth notes followed by a diamond-shaped rest.

37

Exercise 5, measures 37-40. Measure 37 contains a diamond-shaped rest followed by two eighth notes. Measure 38 contains a quarter rest followed by two eighth notes. Measure 39 contains a quarter rest followed by two eighth notes. Measure 40 contains two eighth notes followed by a diamond-shaped rest.

6

Exercise 6, measures 1-4. Measure 1 contains a diamond-shaped rest followed by two eighth notes. Measure 2 contains a diamond-shaped rest followed by two eighth notes. Measure 3 contains a diamond-shaped rest followed by two eighth notes. Measure 4 contains a diamond-shaped rest followed by two eighth notes.

45

Exercise 6, measures 45-48. Measure 45 contains a diamond-shaped rest followed by two eighth notes. Measure 46 contains a diamond-shaped rest followed by two eighth notes. Measure 47 contains a diamond-shaped rest followed by two eighth notes. Measure 48 contains a diamond-shaped rest followed by two eighth notes.

7

Exercise 7, measures 1-4. Measure 1 contains a diamond-shaped rest followed by two eighth notes. Measure 2 contains a diamond-shaped rest followed by two eighth notes. Measure 3 contains a diamond-shaped rest followed by two eighth notes. Measure 4 contains a diamond-shaped rest followed by two eighth notes.

53

Exercise 7, measures 53-56. Measure 53 contains a diamond-shaped rest followed by two eighth notes. Measure 54 contains a diamond-shaped rest followed by two eighth notes. Measure 55 contains a diamond-shaped rest followed by two eighth notes. Measure 56 contains a diamond-shaped rest followed by two eighth notes.

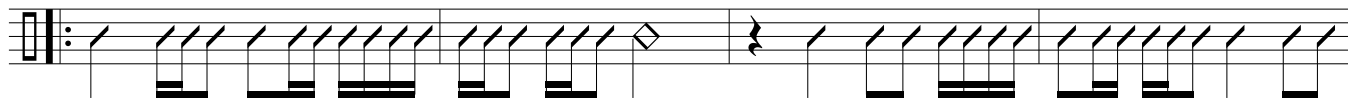
8

Exercise 8, measures 1-4. Measure 1 contains a diamond-shaped rest followed by two eighth notes. Measure 2 contains a diamond-shaped rest followed by two eighth notes. Measure 3 contains a diamond-shaped rest followed by two eighth notes. Measure 4 contains a diamond-shaped rest followed by two eighth notes.

61

Exercise 8, measures 61-64. Measure 61 contains a diamond-shaped rest followed by two eighth notes. Measure 62 contains a diamond-shaped rest followed by two eighth notes. Measure 63 contains a diamond-shaped rest followed by two eighth notes. Measure 64 contains a diamond-shaped rest followed by two eighth notes.

9



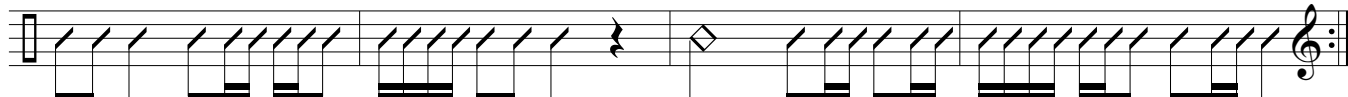
69



10



77



11

Solfeo Hablado



85



12



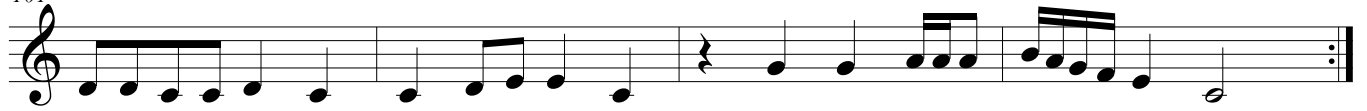
93



13



101



14



109



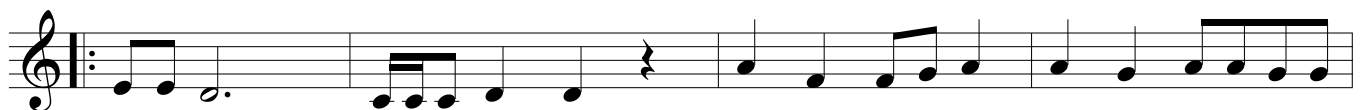
15



117



16



125



17



133



18



141



19



149



20



157

